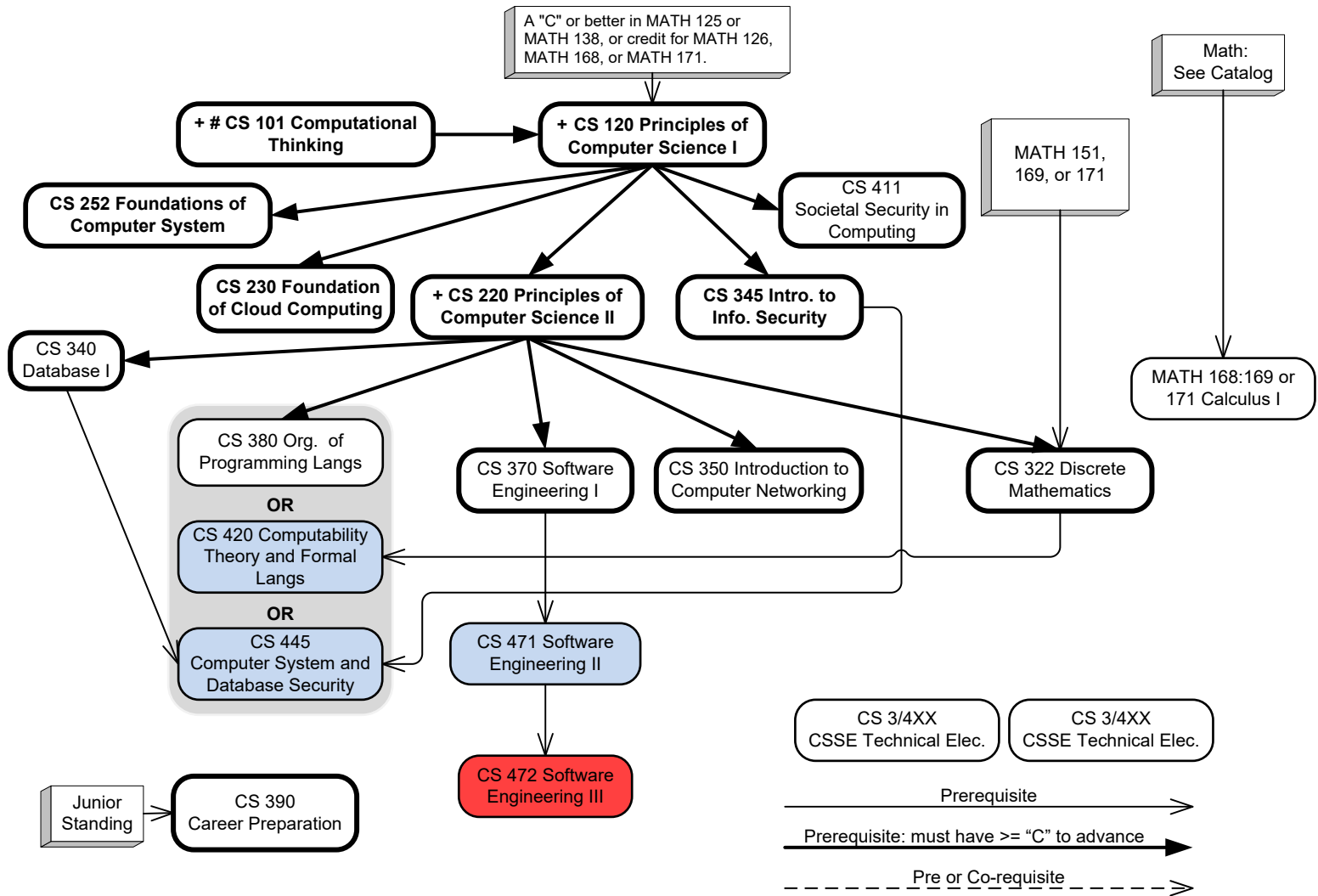


B.S. in Computer Science Program

Advanced Software Engineering Concentration 2024 - 2025



CSSE Technical Electives: Plus 6 additional credit hours chosen from any 300 or 400-level CS or INSY courses (except INSY 301, INSY 304, CS 307, INSY 369, INSY 381, CS 395, CS 398, INSY 466, CS 493, INSY 495, INSY 497, or CS 498) or any 500 or 600-level CS course approved by the School Director. [Note: ITEC = CS]

B.S. Requirements (6-8 credits):

Two courses (each 3-4 hours), one of which must include a lab, chosen from: any Astronomy; any Biology (except BIOL 301:BIOL 302); any Chemistry; any Geology; any PhysiCS.

Courses used to meet the B.S. Requirements for a degree cannot be used to meet any other requirements for that degree.

Students with more than one concentration and/or major should evaluate each independently.

Courses in bold boxes must be passed with a grade of "C" or better

+ **CS 101 & CS 120 & CS 220** can only be attempted twice, including Withdrawals

Passing a **Placement Test** or CS 101 is a prerequisite for CS 120.

Major GPA Requirement: 2.0 in all CS, MATH, STAT courses applied to the major, excluding courses used to meet the B.S. Requirement.

REAL Curriculum: This major fulfills the **R** and **L** areas. Students must fulfill the REAL Curriculum by identifying a combination of majors, minors, and certificates that meet their educational goals that complete the R, E, A, and L areas.